

New Faces

MEET OUR NEW STAFF
& PARTNERS IN
MINISTRY



SPRING & SUMMER
SCHEDULE SUNDAY
SCHOOL, CHOIR &
WORSHIP



SERVE WITH
COVENANT THIS
SEASON



SPOTLIGHT ON
COVENANT'S
MEMORIAL GARDEN



EASTER & AFTER

SEEK | SERVE | CELEBRATE

COVENANT

PRESBYTERIAN CHURCH

Covenant Presbyterian Church is a neighborhood church in the middle of the city. If you are looking for connection and care in a community of faith, come see us at Covenant. We may not have all the bells and whistles of the big church, but we have a sincere desire to follow after Christ and love God's people.



NEW FACES ON CAMPUS

Justin Fannon, Pastoral Resident

Please join me in welcoming Justin Fannon to Covenant's staff as our Pastoral Resident. Justin is in his final year at Candler School of Theology at Emory University, and is in the ordination process with the PC(USA). Similar to a medical residency at a teaching hospital, the pastoral resident holds a unique position in the church having completed internships and some theological education, but is still developing his own gifts and understanding of a unique call in vocational ministry. While at Covenant, Justin will focus on youth and 20s & 30s, and is planning a new initiative for men's small groups. Justin's first Sunday with us is May 7.



Anna Ward Martin, LPC

Anna Ward Martin is a licensed professional counselor who has worked in the Atlanta region for over a decade. Anna Ward served as the clinical director and clinical supervisor at Samaritan Counseling Center and an LPC at Warnecke Professional Counseling. Her experience ranges from family therapy to individual psychotherapy. She specializes in mood disorders, substance abuse, life transitions, relationships, and grief and loss. She holds degrees from University of Georgia and Argosy University. Anna Ward is renting office space on our top floor (Richard's old office) on Mondays and Tuesdays, 9 a.m. to 5 p.m. beginning mid April.



NEW FACES ON CAMPUS - STAFF SINGERS

Emily Crisp (mezzo-soprano) - Emily has been a featured soloist for many works and numerous operas and concerts with such companies as The Atlanta Opera, Chicago Symphony, and Grant Park Music Festival. Emily lives in Atlanta where she works in administration with The Atlanta Opera.

Malachi Marshall (baritone) - Malachi performs with the Atlanta Opera Chorus, and with the regional opera companies Capitol City Opera and Peach State Opera in Atlanta. He attended Kennesaw State University where he studied voice and sang with the KSU Opera Theater Ensemble.

Margaret McMurray (soprano) - Margaret has a BM from the University of Memphis and an MM from Georgia State University, both in voice performance. Since moving to Atlanta has sung with ATL Vocalite, Atlanta Concert Opera, Peach State Opera, and Act3 Playhouse. She is a professional pet sitter, an amateur book reviewer and the leader of a book group called Atlanta Literary Society.

Daniel Weisman (tenor) - Daniel received degrees in Music Education and Vocal Performance from Kent State University before relocating to Atlanta to earn a Masters in Vocal Performance from GSU. Daniel currently works as the Artistic Administrator for Capitol City Opera Company, and as the Executive and Artistic Director for Atlanta Concert Opera. Daniel works full time as a billing coordinator at Alston & Bird.

COVENANT
PRESBYTERIAN CHURCH

Staff Singers



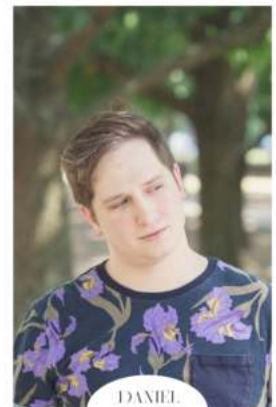
EMILY
CRISP



MARGARET
MCMURRAY



MALACHI
MARSHALL



DANIEL
WEISMAN

SEEK

***SPRING & SUMMER SERIES ***

9:30 to 10:30 a.m. in the Fellowship Hall

Meeting Jesus Again for the First Time

with Dr. Carson Meredith, April 16, 23 & 30

Based on the content of a book of the same name by Marcus Borg, explore how the early Christian community - the one developing just after the "first Easter" - experienced and understood Jesus' teachings and his identity.

Debt: A Conversation About Community, Value, and Faith

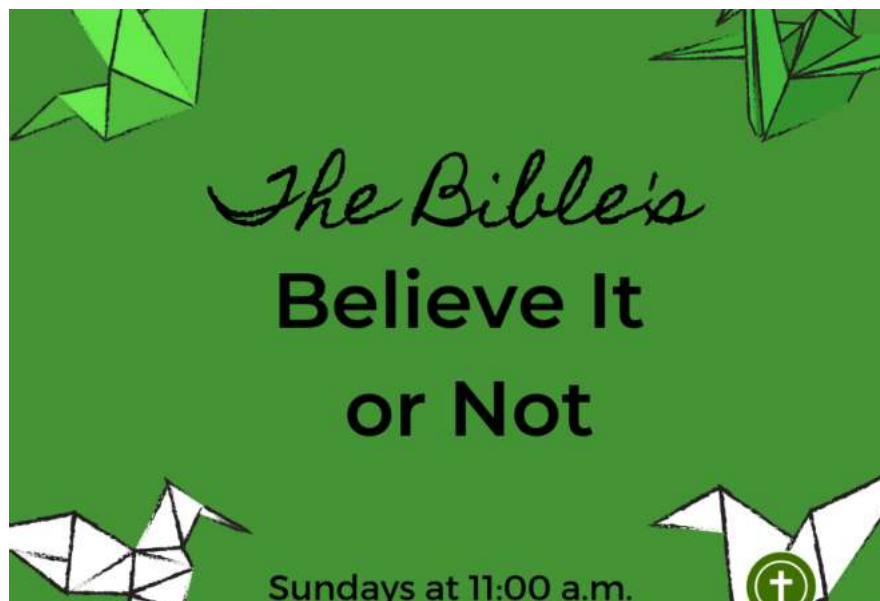
with Dr. Will Simson, May 7, 21 & 28

Join us for three lessons exploring the Biblical concept of debt. What can we learn and how does that shape us for today?

Rhythm of Prayer: Meditations for Renewal

with Rev. Jamie Butcher for June & July

Based on the book of prayer edited by Sarah Bessey



SERMON SERIES, APRIL 30 to May 27

SUMMER

CONSIDER JOINING COVENANT'S CHOIR FOR THE SUMMER

In June, the choir will meet on Sunday mornings at 10:15 a.m. to rehearse for worship service that day at 11:00 a.m. Summer Choir is open to anyone.

SUMMER HOLIDAYS

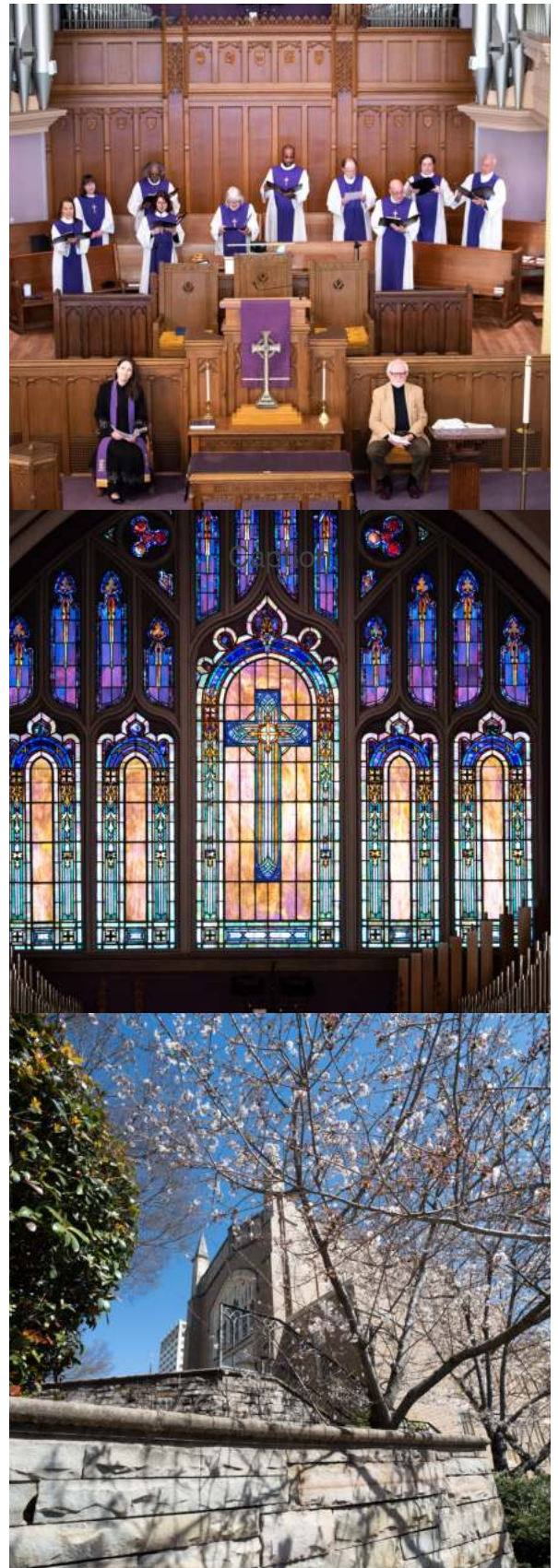
On the Sundays of Memorial Day, Fourth of July and Labor Day weekends, we will worship at 11:00 a.m. in the Fellowship Hall with a more informal service. Also, please note there will be no Sunday school.

The Office is closed on Monday, May 29 for Memorial Day, Tuesday, July 4 for the Fourth, and Monday, September 3 for Labor Day. We also are closed on Monday, Jun 19th to observe Juneteenth.

OFFICE HOURS & BUILDING ACCESS

Thank you for helping us secure the building by changing codes. If you have any trouble getting into the building outside of office hours, please reach out to Shanita in the office. We are happy to create a code for you to gain access to the building. In general, office hours are

- Mondays, 10 to 5
- Tuesdays, 12 to 5
- Wednesdays, 10 to 5
- Thursdays, 10 to 5



CELEBRATE



Save the Date for the annual **Church Picnic on Sunday, May 7** after worship at 12:15 a.m. Contact office@covpresatl.org for ways to be involved.

Claude Cox is heading up the **Braves Baseball Game** again this summer. Stay tuned for the exact date and time.
Go-Phillies! Go Braves!

Looking for a way to be involved on an ongoing basis? Covenant has a vibrant **Dinner Group** program. Members meet monthly in individual's homes. Want more information? Contact jamie@covpresatl.org

SERVE

In honor of Earth Day, we'll have a clean-up day on **Sunday, April 23 at 12:00 p.m.** Plan to join us after to organize and beautify. Also, plan to take a tour of the finished HVAC project! We are providing a light lunch.

At 9:30 a.m. on **Sunday, May 14**, help us thank the mothers in our church world. We'll make Mother's Day cards to give to the Spanish Academy parents.

The place to be on **Tuesday, July 4** is on Covenant's Front Plaza for the Peachtree Road Race. We need you to help us welcome runners for bathroom and banana breaks. Save the date.

Ongoing service opportunities include sandwich making for Central's night shelter and Parish Care Groups. Contact jamie@covpresatl.org for more information

SPOTLIGHT

COVENANT PRESBYTERIAN'S MEMORIAL GARDEN

Did you know that Covenant Presbyterian Church houses a Memorial Garden on its grounds? Located between the two main doors facing Peachtree Street, the Memorial Garden is a beautiful final resting place.

When a loved one dies, there are a lot of logistics to work through in a time that is deep with emotion. You are loved in this congregation. We will walk alongside you in planning and delivering a service with compassion and care.

We have material that can help you begin to make choices. You may consider, with cremation, to be interred in our Memorial Garden and honored on the garden wall with a plaque. Contact the church office for the form and guidelines.



Peace I leave with you; my peace I give to you. I do not give to you as the world gives. Do not let your hearts be troubled, and do not let them be afraid.

John 14:27